

1 PV AC CONDUCTOR AMPACITY CALCULATIONS: TO ROOF TOP JUNCTION BOX
AMBIENT TEMPERATURE ADJUSTMENT FOR EXPOSED CONDUIT PER NEC 310.15(B)(2)(C): +22°
EXPECTED WIRE TEMP (°C): 30°+22°=52°
TEMP CORRECTION PER TABLE 310.15: 0.76
OF CURRENT CARRYING CONDUCTORS: 20
CIRCUIT FILL CORRECTION PER NEC 310.15(B)(3)(a): 0.50
CIRCUIT CONDUCTOR SIZE: 8 AWG
CIRCUIT CONDUCTOR AMPACITY: 55 A

(06) BRANCHES OF 6 MODULES
REQUIRED CIRCUIT CONDUCTOR AMPACITY PER NEC 690.8(A&B):
1.25 X MAX AC OUTPUT CURRENT X # OF INVERTERS PER STRING
1.25 X (1.77 X 06) = 13.28A

(02) BRANCHES OF 7 MODULES
REQUIRED CIRCUIT CONDUCTOR AMPACITY PER NEC 690.8(A&B):
1.25 X MAX AC OUTPUT CURRENT X # OF INVERTERS PER STRING
1.25 X (1.77 X 07) = 15.49A

(02) BRANCHES OF 5 MODULES
REQUIRED CIRCUIT CONDUCTOR AMPACITY PER NEC 690.8(A&B):
1.25 X MAX AC OUTPUT CURRENT X # OF INVERTERS PER STRING
1.25 X (1.77 X 05) = 11.06A

DERATED AMPACITY OF CIRCUIT CONDUCTOR PER NEC TABLE 310.15
TEMP CORR. PER NEC TABLE 310.15 X
CONDUIT FILL CORR. PER NEC 310.15(B)(3)(a) X
CIRCUIT CONDUCTOR AMPACITY =
0.76 X 0.50 X 55 = 20.90 A

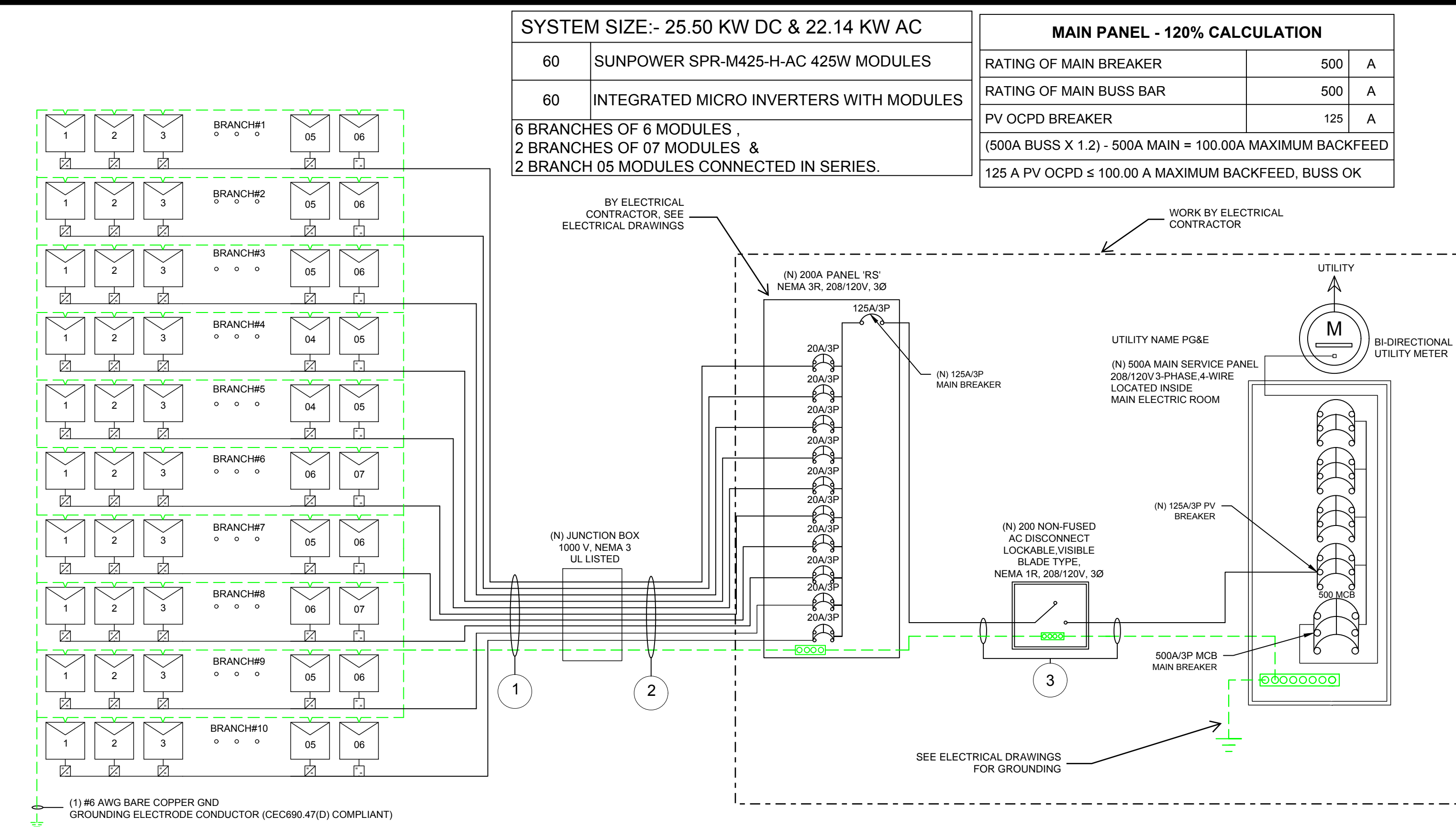
2 AC CONDUCTOR AMPACITY CALCULATIONS: FROM JUNCTION BOX TO SOLAR PNL
EXPECTED WIRE TEMP (°C): 30°+22°=52°
TEMP CORRECTION PER NEC TABLE 210: 0.76
#OF CURRENT CARRYING CONDUCTORS: 20
CIRCUIT FILL CORRECTION PER NEC 310.15(B)(3)(A): 0.50
CIRCUIT CONDUCTOR SIZE: 2 AWG
CIRCUIT CONDUCTOR AMPACITY: 130A
CONDUIT FILL PER NEC 310.15(B)(2)(A):
REQUIRED CIRCUIT CONDUCTOR AMPACITY PER NEC 690.8(B)
1.25 X AC OUTPUT CURRENT X # OF INVERTERS
1.25 X 1.77 X 14= 30.98A

DERATED AMPACITY OF CIRCUIT CONDUCTORS PER NEC TABLE 310.16:
TEMP CORR. PER NEC 310.16 X
CONDUIT FILL CORR. PER NEC 310.15(B)(3)(a) X
0.76 X 0.50 X 130 = 49.40A

3 AC CONDUCTOR AMPACITY CALCULATIONS: FROM COMBINER BOX TO MSP
PER ELECTRICAL DRAWINGS

ELECTRICAL NOTES	
1	ALL EQUIPMENT TO BE LISTED BY UL OR OTHER NRTL, AND LABELED FOR ITS APPLICATION.
2	ALL CONDUCTORS SHALL BE COPPER, RATED FOR 600 V AND 90 DEGREE C WET ENVIRONMENT.
3	WIRING, CONDUIT, AND RACEWAYS MOUNTED ON ROOFTOPS SHALL BE ROUTED DIRECTLY TO, AND LOCATED AS CLOSE AS POSSIBLE TO THE NEAREST RIDGE, HIP, OR VALLEY, WORKING CLEARANCES AROUND ELECTRICAL EQUIPMENT SHALL COMPLY WITH NEC 110.26.
4	DRAWINGS INDICATE THE GENERAL ARRANGEMENT OF SYSTEMS. CONTRACTOR SHALL FURNISH ALL NECESSARY OUTLETS, SUPPORTS, FITTINGS AND ACCESSORIES TO FULLFILL APPLICABLE CODES AND STANDARDS.
5	WHERE SIZES OF JUNCTION BOX, RACEWAYS, AND CONDUITS ARE NOT SPECIFIED, THE CONTRACTOR SHALL SIZE THEM ACCORDINGLY.
6	ALL WIRE TERMINATIONS SHALL BE APPROPRIATELY LABELED AND READILY VISIBLE.
7	MODULE GROUNDING CLIPS TO BE INSTALLED BETWEEN MODULE FRAME AND MODULE SUPPORT RAIL, PER THE GROUNDING CLIP MANUFACTURER'S INSTRUCTION.
8	MODULE SUPPORT RAIL TO BE BONDED TO CONTINUOUS COPPER G.E.C.VIA WEEB LUG OR ILSGO GBL-4DBT LAY-IN LUG.
9	THE POLARITY OF THE GROUNDED CONDUCTORS IS NEGATIVE.
10	

PERCENT OF VALUES	NUMBER OF CURRENT CARRYING CONDUCTORS IN EMT
0.80	4-6
0.70	7-9
0.50	10-20



TAG	CONDUCTOR	CONDUCTOR SIZE	NUMBER OF CONDUCTORS	CONDUIT/CABLE TYPE	CONDUIT SIZE
1	THHN/THWN-2 EGC/GEC: THHN/THWN-2	10 AWG 6 AWG	20 1	EMT	1"
2	LINE: THHN/THWN2-CU EGC/GEC: THHN/THWN 2-CU	2 AWG 6 AWG	2 1	EMT	2"
3	PER ELECTRICAL DRAWINGS				

SYSTEM NOTES:
1. PV SYSTEM IS UNGROUNDED
2. MODULES ARE BONDED TO RAIL USING EVEREST INTEGRATED GROUNDING.
3. RAILS ARE BONDED USING UL 2703 RATED LAY-IN LUGS
4. BARE COPPER IS TRANSITIONED TO THHN/THWN-2 VIA IRREVERSIBLE CRIMP; GEC TO BE CONTINUOUS PER CEC 250.64(C)

ADDITIONAL NOTE:

SIGNAGE REQUIREMENTS:

- RED BACKGROUND
- WHITE LETTERING
- MINIMUM 3/8" LETTER HEIGHT
- ALL CAPITAL LETTERS
- AERIAL OR SIMILAR FONT, NON-BOLD
- REFLECTIVE WEATHER RESISTANT MATERIAL SUITABLE FOR THE ENVIRONMENT (DURABLE ADHESIVE MATERIALS MUST MEET THIS REQUIREMENT)

ADHESIVE FASTENED SIGNS:

- THE LABEL SHALL BE SUITABLE FOR THE ENVIRONMENT WHERE IT IS INSTALLED.
- WHERE REQUIRED ELSEWHERE IN THIS CODE, ALL FIELD APPLIED LABELS, WARNINGS, AND MARKINGS SHOULD COMPLY WITH ANSI Z535.4 [CEC 110.21(B) FIELD MARKING].
- ADHESIVE FASTENED SIGNS MAY BE ACCEPTABLE IF PROPERLY ADHERED. VINYL SIGNS SHALL BE WEATHER RESISTANT

CAUTION:
POWER TO THIS BUILDING IS ALSO SUPPLIED FROM THE FOLLOWING SOURCES WITH DISCONNECTS AS SHOWN

415 NATURAL BRIDGES DR, SANTA CRUZ, CA 95060

LABEL LOCATION: MAIN SERVICE PANEL

PHOTOVOLTAIC SYSTEM AC DISCONNECT
RATED AC OPERATING CURRENT 132.75 AMPS
AC NOMINAL OPERATING VOLTAGE 240 VOLTS

LABEL LOCATION:
AC DISCONNECT, POINT OF INTERCONNECTION
PER CODE: CEC 2019

WARNING: PHOTOVOLTAIC POWER SOURCE

LABEL LOCATION:
CONDUIT, COMBINER BOX
PER CODE: CEC 2019

PHOTOVOLTAIC SYSTEM EQUIPPED WITH RAPID SHUTDOWN

LABEL LOCATION:
WEATHER RESISTANT MATERIAL, DURABLE PLAQUE, UL969 AS STANDARD TO WEATHER RATING (UL LISTING OF MARKINGS NOT REQUIRED), MIN 3 8" LETTER HEIGHT ARIAL OR SIMILAR FONT NON-BOLD, PLACED WITHIN THE MAIN SERVICE DISCONNECT, PLACED ON THE OUTSIDE OF THE COVER WHEN DISCONNECT IS OPERABLE WITH SERVICE PANEL CLOSED. (PER CODE: CEC690.12, 690.56(C))

WARNING DUAL POWER SOURCE
SECOND SOURCE IS PHOTOVOLTAIC SYSTEM

LABEL LOCATION:
POINT OF INTERCONNECTION
PER CODE: CEC 2019

WARNING
ELECTRIC SHOCK HAZARD
DO NOT TOUCH TERMINALS
TERMINALS ON BOTH LINE AND LOAD SIDES MAY BE ENERGIZED IN THE OPEN POSITION

LABEL LOCATION:
AC DISCONNECT, POINT OF INTERCONNECTION
PER CODE: CEC 2019

WARNING
INVERTER OUTPUT CONNECTION DO NOT RELOCATE THIS OVERCURRENT DEVICE

LABEL LOCATION:
POINT OF INTERCONNECTION
PER CODE: CEC 2019
[Not required if panelboard is rated not less than sum of ampere ratings of all overcurrent devices supplying it]

DATA PER PANEL

NOMINAL OPERATING AC VOLTAGE	208V
NOMINAL OPERATING AC FREQUENCY	60Hz
MAXIMUM AC POWER	369VA
MAXIMUM AC CURRENT	1.77A
MAXIMUM OVERCURRENT DEVICE RATING FOR AC MODULE PROTECTION PER CIRCUIT	20A

LABEL LOCATION:
COMBINER BOX
PER CODE: CEC 2019

SOLAR PV SYSTEM EQUIPPED WITH RAPID SHUTDOWN

TURN RAPID SHUTDOWN SWITCH TO THE "OFF" POSITION TO SHUTDOWN PV SYSTEM AND REDUCE SHOCK HAZARD IN THE ARRAY

LABEL LOCATION:
SERVICE DISCONNECTING MEANS
PER CODE: CEC 2019

REVISIONS: BY:

MONTEREY ENERGY GROUP
Consulting Mechanical Engineering
26465 Carmel Rancho Blvd. Suite 8, Carmel, CA 93923
831-372-8328 VOICE www.montereyenergygroup.com

MONTEREY ENERGY GROUP
Consulting Mechanical Engineering
26465 Carmel Rancho Blvd. Suite 8, Carmel, CA 93923
831-372-8328 VOICE www.montereyenergygroup.com

AFFORDABLE HOUSING
415 NATURAL BRIDGES DR,
SANTA CRUZ, CA 95060
APN:- 00301106

SOLAR PHOTOVOLTAIC ELECTRICAL DETAILS

DATE:
12/8/2022

SHEET SIZE
ARCH_D
24" X 36"

SHEET NUMBER
PV-2

Type 1, 3, & 3R Enclosures

Junction Boxes
Type 3R Screw Cover - Painted & Galvanized
Data and Illustration Sheet

Accessories

- Touch-up paint
- See Accessories section

Construction

- Enclosure and cover are fabricated from code gauge galvanized steel for painted or galvanized steel, (see table, page 57)
- Enclosure body has embossed mounting holes on the back
- Available with or without knockouts on the bottom end of enclosures less than 30 inches wide
- Cover is held secure by sliding it under the top and flange and fastening it with plated screws on the bottom end flange, (larger sizes use two studs and wing nuts)

Discount Schedule: A2

Subclass: AS0 & Z60

Application

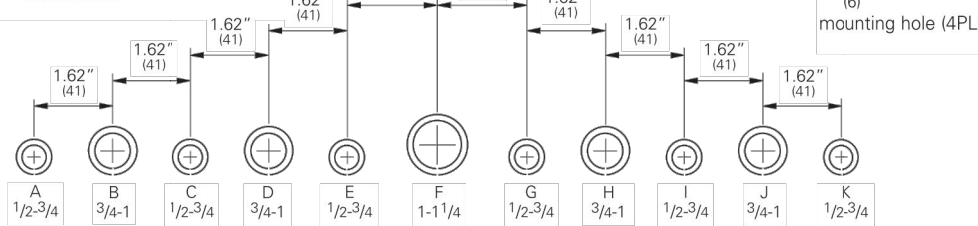
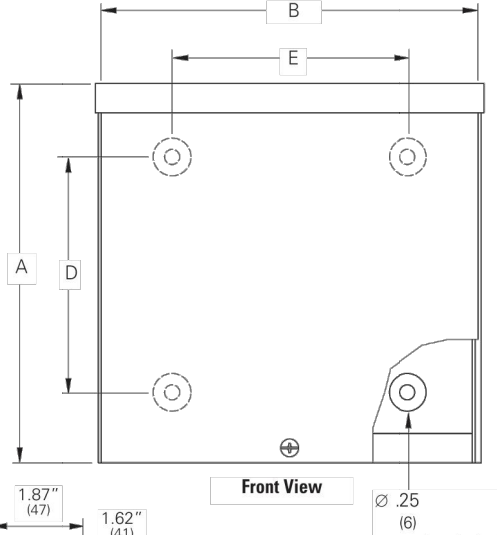
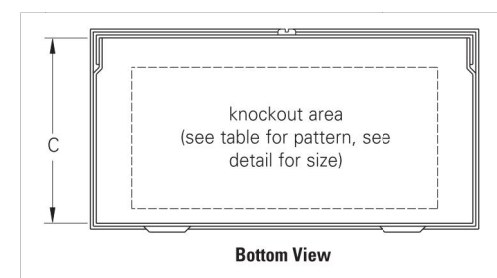
- Used as wiring boxes, junction and pull boxes
- Protects against falling rain, sleet and external ice formation

Standards

- UL 50 listed, Type 3R
- CSA C22.2 No. 40 certified, Type 3R
- Conforms to NEMA standard for Type 3R

Finish

- Wash and phosphate undercoat
- ANSI 61 gray acrylic electrocoat finish



Conduit Sizes

Note: See table for applicable knockout pattern.

Notes: We can provide special sizes, finishes and other modifications. Consult the factory for your special requirements. Dimensions are in inches. Millimeters shown are for reference only. Data subject to change without notice.

Eaton

56

B-Line series electrical enclosures

Type 1, 3, & 3R Enclosures

Junction Boxes - Type 3R Screw Cover - Painted & Galvanized
Catalog Number

Enclosure Catalog Number		Enclosure Size Height x Width x Depth A x B x C		D		E		Gauge		Knockout Pattern	
KD	Painted No KD	KD	Galvanized No KD	in.	mm	in.	mm	in.	mm	Bottom	
444 RTSC	444 RTSC NK	444 RTSCGV	--	4.00 x 4.00 x 4.00	102 x 102 x 102	1.50	38	1.81	46	16	(C)(D)
644 RTSC	644 RTSC NK	644 RTSCGV	--	6.00 x 4.00 x 4.00	152 x 102 x 102	3.50	89	1.81	46	16	(C)(D)
844 RTSC	844 RTSC NK	844 RTSCGV	--	8.00 x 4.00 x 4.00	203 x 102 x 102	3.50	89	2.01	51	16	(C)(D)
1044 RTSC	1044 RTSC NK	1044 RTSCGV	--	10.00 x 4.00 x 4.00	254 x 102 x 102	5.50	140	2.01	51	16	(C)(D)
1244 RTSC	1244 RTSC NK	1244 RTSCGV	--	12.00 x 4.00 x 4.00	305 x 102 x 102	5.50	140	2.01	51	16	(C)(D)
1444 RTSC	1444 RTSC NK	1444 RTSCGV	--	14.00 x 4.00 x 4.00	356 x 102 x 102	7.50	191	2.01	51	16	(C)(D)
1644 RTSC	1644 RTSC NK	1644 RTSCGV	--	16.00 x 4.00 x 4.00	406 x 102 x 102	7.50	191	2.01	51	16	(C)(D)
1844 RTSC	1844 RTSC NK	1844 RTSCGV	--	18.00 x 4.00 x 4.00	457 x 102 x 102	15.50	394	2.01	51	16	(C)(D)
2044 RTSC	2044 RTSC NK	2044 RTSCGV	--	20.00 x 4.00 x 4.00	508 x 102 x 102	21.50	546	2.01	51	16	(C)(D)
2244 RTSC	2244 RTSC NK	2244 RTSCGV	--	22.00 x 4.00 x 4.00	559 x 102 x 102	21.50	546	2.01	51	16	(C)(D)
2444 RTSC	2444 RTSC NK	2444 RTSCGV	--	24.00 x 4.00 x 4.00	610 x 102 x 102	21.50	546	2.01	51	16	(C)(D)
2644 RTSC	2644 RTSC NK	2644 RTSCGV	--	26.00 x 4.00 x 4.00	661 x 102 x 102	21.50	546	2.01	51	16	(C)(D)
2844 RTSC	2844 RTSC NK	2844 RTSCGV	--	28.00 x 4.00 x 4.00	712 x 102 x 102	21.50	546	2.01	51	16	(C)(D)
3044 RTSC	3044 RTSC NK	3044 RTSCGV	--	30.00 x 4.00 x 4.00	763 x 102 x 102	21.50	546	2.01	51	16	(C)(D)
3244 RTSC	3244 RTSC NK	3244 RTSCGV	--	32.00 x 4.00 x 4.00	814 x 102 x 102	21.50	546	2.01	51	16	(C)(D)
3444 RTSC	3444 RTSC NK	3444 RTSCGV	--	34.00 x 4.00 x 4.00	865 x 102 x 102	21.50	546	2.01	51	16	(C)(D)
3644 RTSC	3644 RTSC NK	3644 RTSCGV	--	36.00 x 4.00 x 4.00	916 x 102 x 102	21.50	546	2.01	51	16	(C)(D)
3844 RTSC	3844 RTSC NK	3844 RTSCGV	--	38.00 x 4.00 x 4.00	967 x 102 x 102	21.50	546	2.01	51	16	(C)(D)
4044 RTSC	4044 RTSC NK	4044 RTSCGV	--	40.00 x 4.00 x 4.00	1018 x 102 x 102	21.50	546	2.01	51	16	(C)(D)
4244 RTSC	4244 RTSC NK	4244 RTSCGV	--	42.00 x 4.00 x 4.00	1069 x 102 x 102	21.50	546	2.01	51	16	(C)(D)
4444 RTSC	4444 RTSC NK	4444 RTSCGV	--	44.00 x 4.00 x 4.00	1120 x 102 x 102	21.50	546	2.01	51	16	(C)(D)
4644 RTSC	4644 RTSC NK	4644 RTSCGV	--	46.00 x 4.00 x 4.00	1171 x 102 x 102	21.50	546	2.01	51	16	(C)(D)
4844 RTSC	4844 RTSC NK	4844 RTSCGV	--	48.00 x 4.00 x 4.00	1222 x 102 x 102	21.50	546	2.01	51	16	(C)(D)
5044 RTSC	5044 RTSC NK	5044 RTSCGV	--	50.00 x 4.00 x 4.00	1273 x 102 x 102	21.50	546	2.01	51	16	(C)(D)
5244 RTSC	5244 RTSC NK	5244 RTSCGV	--	52.00 x 4.00 x 4.00	1324 x 102 x 102	21.50	546	2.01	51	16	(C)(D)
5444 RTSC	5444 RTSC NK	5444 RTSCGV	--	54.00 x 4.00 x 4.00	1375 x 102 x 102	21.50	546	2.01	51	16	(C)(D)
5644 RTSC	5644 RTSC NK	5644 RTSCGV	--	56.00 x 4.00 x 4.00	1426 x 102 x 102	21.50	546	2.01	51	16	(C)(D)
5844 RTSC	5844 RTSC NK	5844 RTSCGV	--	58.00 x 4.00 x 4.00	1477 x 102 x 102	21.50	546	2.01	51	16	(C)(D)
6044 RTSC	6044 RTSC NK	6044 RTSCGV	--	60.00 x 4.00 x 4.00	1528 x 102 x 102	21.50	546	2.01	51	16	(C)(D)
6244 RTSC	6244 RTSC NK	6244 RTSCGV	--	62.00 x 4.00 x 4.00	1579 x 102 x 102	21.50	546	2.01	51	16	(C)(D)
6444 RTSC	6444 RTSC NK	6444 RTSCGV	--	64.00 x 4.00 x 4.00	1630 x 102 x 102	21.50	546	2.01	51	16	(C)(D)
6644 RTSC	6644 RTSC NK	6644 RTSCGV	--	66.00 x 4.00 x 4.00	1681 x 102 x 102	21.50	546	2.01	51	16	(C)(D)
6844 RTSC	6844 RTSC NK	6844 RTSCGV	--	68.00 x 4.00 x 4.00	1732 x 102 x 102	21.50	546	2.01	51	16	(C)(D)
7044 RTSC	7044 RTSC NK	7044 RTSCGV	--	70.00 x 4.00 x 4.00	1783 x 102 x 102	21.50	546	2.01	51	16	(C)(D)
7244 RTSC	7244 RTSC NK	7244 RTSCGV	--	72.00 x 4.00 x 4.00	1834 x 102 x 102	21.50	546	2.01	51	16	(C)(D)
7444 RTSC	7444 RTSC NK	7444 RTSCGV	--	74.00 x 4.00 x 4.00	1885 x 102 x 102	21.50	546	2.01	51	16	(C)(D)
7644 RTSC	7644 RTSC NK	7644 RTSCGV	--	76.00 x 4.00 x 4.00	1936 x 102 x 102	21.50	546	2.01	51	16	(C)(D)
7844 RTSC	7844 RTSC NK	7844 RTSCGV	--	78.00 x 4.00 x 4.00	1987 x 102 x 102	21.50	546	2.01	51	16	(C)(D)
8044 RTSC	8044 RTSC NK	8044 RTSCGV	--	80.00 x 4.00 x 4.00	2038 x 102 x 102	21.50	546	2.01	51	16	(C)(D)
8244 RTSC	8244 RTSC NK	8244 RTSCGV	--	82.00 x 4.00 x 4.00	2089 x 102 x 102	21.50	546	2.01	51	16	(C)(D)
8444 RTSC	8444 RTSC NK	8444 RTSCGV	--	84.00 x 4.00 x 4.00	2140 x 102 x 102	21.50	546	2.01	51	16	(C)(D)
8644 RTSC	8644 RTSC NK	8644 RTSCGV	--	86.00 x 4.00 x 4.00	2191 x 102 x 102	21.50	546	2.01	51	16	(C)(D)
8844 RTSC	8844 RTSC NK	8844 RTSCGV	--	88.00 x 4.00 x 4.00	2242 x 102 x 102	21.50	546	2.01	51	16	(C)(D)
9044 RTSC	9044 RTSC NK	9044 RTSCGV	--	90.00 x 4.00 x 4.00	2293 x 102 x 102	21.50	546	2.01	51	16	(C)(D)
9244 RTSC	9244 RTSC NK	9244 RTSCGV	--	92.00 x 4.00 x 4.00	2344 x 102 x 102	21.50	546	2.01	51	16	(C)(D)
9444 RTSC	9444 RTSC NK	9444 RTSCGV	--	94.00 x 4.00 x 4.00	2395 x 102 x 102	21.50	546	2.01	51	16	(C)(D)
9644 RTSC	9644 RTSC NK	9644 RTSCGV	--	96.00 x 4.00 x 4.00	2446 x 102 x 102	21.50	546	2.01	51	16	(C)(D)
9844 RTSC	9844 RTSC NK	9844 RTSCGV	--	98.00 x 4.00 x 4.00	2497 x 102 x 102	21.50	546	2.01	51	16	(C)(D)
10044 RTSC	10044 RTSC NK	10044 RTSCGV	--	100.00 x 4.00 x 4.00	2548 x 102 x 102	21.50	546	2.01	51	16	(C)(D)
10244 RTSC	10244 RTSC NK	10244 RTSCGV	--	102.00 x 4.00 x 4.00	2599 x 102 x 102	21.50	546	2.01	51	16	(C)(D)
10444 RTSC	10444 RTSC NK	10444 RTSCGV	--	104.00 x 4.00 x 4.00	2650 x 102 x 102	21.50	546	2.01	51	16	(C)(D)
10644 RTSC	10644 RTSC NK	10644 RTSCGV	--	106.00 x 4.00 x 4.00	2701 x 102 x 102	21.50	546	2.01	51	16	(C)(D)
10844 RTSC	10844 RTSC NK	10844 RTSCGV	--	108.00 x 4.00 x 4.00	2752 x 102 x 102	21.50	546	2.01	51	16	(C)(D)
11044 RTSC	11044 RTSC NK	11044 RTSCGV	--	110.00 x 4.00 x 4.00	2803 x 102 x 102	21.50	546	2.01	51	16	(C)(D)
11244 RTSC	11244 RTSC NK	11244 RTSCGV	--	112.00 x 4.00 x 4.00	2854 x 102 x 102	21.50	546	2.01	51	16	(C)(D)
11444 RTSC	11444 RTSC NK	11444 RTSCGV	--	114.00 x 4.00 x 4.00	2905 x 102 x 102	21.50	546	2.01	51	16	(C)(D)
11644 RTSC	11644 RTSC NK	11644 RTSCGV	--	116.00 x 4.00 x 4.00	2956 x 102 x 102	21.50	546	2.01	51	16	(C)(D)
11844 RTSC	11844 RTSC NK	11844 RTSCGV	--	118.00 x 4.00 x 4.00	3007 x 102 x 102	21.50	546	2.01	51	16	(C)(D)
12044 RTSC	12044 RTSC NK	12044 RTSCGV	--	120.00 x 4.00 x 4.00	3058 x 102 x 102	21.50	546	2.01	51	16	(C)(D)
12244 RTSC	12244 RTSC NK	12244 RTSCGV	--	122.00 x 4.00 x 4.00	3109 x 102 x 102	21.50	546	2.01	51	16	(C)(D)
12444 RTSC	12444 RTSC NK	12444 RTSCGV	--	124.00 x 4.00 x 4.00	3160 x 102 x 102	21.50	546	2.01	51	16	(C)(D)
12644 RTSC	12644 RTSC NK	12644 RTSCGV	--	126.00 x 4.00 x 4.00	3211 x 102 x 102	21.50	546	2.01	51	16	(C)(D)
12844 RTSC	12844 RTSC NK	12844 RTSCGV	--	128.00 x 4.00 x 4.00	3262 x 102 x 102	21.50	546	2.01	51	16	(C)(D)
13044 RTSC	13044 RTSC NK	13044 RTSCGV	--	130.00 x 4.00 x 4.00	3313 x 102 x 102	21.50	546	2.01	51	16	(C)(D)
13244 RTSC	13244 RTSC NK	13244 RTSCGV	--	132.00 x 4.00 x 4.00	3364 x 102 x 102	21.50	546	2.01	51	16	(C)(D)
13444 RTSC	13444 RTSC NK	13444 RTSCGV	--	134.00 x 4.00 x 4.00	3415 x 102 x 102	21.50	546	2.01	51	16	(C)(D)
13644 RTSC	13644 RTSC NK	13644 RTSCGV	--	136.00 x 4.00 x 4.00	3466 x 102 x 102	21.50	546	2.01	51	16	(C)(D)
13844 RTSC	13844 RTSC NK	13844 RTSCGV	--	138.00 x 4.00 x 4.00	3517 x 102 x 102	21.50	546	2.01	51	16	(C)(D)
14044 RTSC	14044 RTSC NK	14044 RTSCGV	--	140.00 x 4.00 x 4.00	3568 x 102 x 102	21.50	546	2.01	51	16	(C)(